

Final circular

ICAME47 - A CONFLUENCE OF CORPUS RESEARCH IN THE AGE OF AI

GETTING READY FOR ICAME47 IN KOBLENZ!

Dear ICAME participants,

We are very much looking forward to welcoming you to Koblenz in just a few weeks! An exciting programme awaits you, featuring **five pre-conference workshops, four plenary talks**, as well as a wide range of **full papers, work-in-progress reports, and software demonstrations**.

We are currently finalising the programme and the book of abstracts. You can always find the **latest versions** on our website: <https://wp.uni-koblenz.de/icame47/programme/>

In this final circular, you will find all the essential information about the conference venue, lunch and coffee breaks, getting around Koblenz and local transport options, presentation infrastructure, Wi-Fi access, the conference warming on the fortress (Festung Ehrenbreitstein) (→ Wednesday), the boat trip (→ Thursday), the conference dinner (→ Friday), travel information, and things to do in and around Koblenz. We have also included a list of interesting and quirky facts about Germany, some notes on conference wellbeing, and brief information about the planned post-conference edited volume.

We are looking forward to a wonderful conference with all of you. In the spirit of the conference theme: **let's flow together!**

With all very best,
the ICAME47 Organising Committee



Ann-Katrin Biehl



Nico Boller



Dina Necke



Andreas Weilinghoff



Saran Nair



Jana Semrau



Sarah Wunderlich

CONFERENCE VENUE - OVERVIEW

ICAME47 is going to take place on the Metternich campus of the **University of Koblenz** – Germany’s youngest university, located just steps away from the scenic banks of the Moselle River.

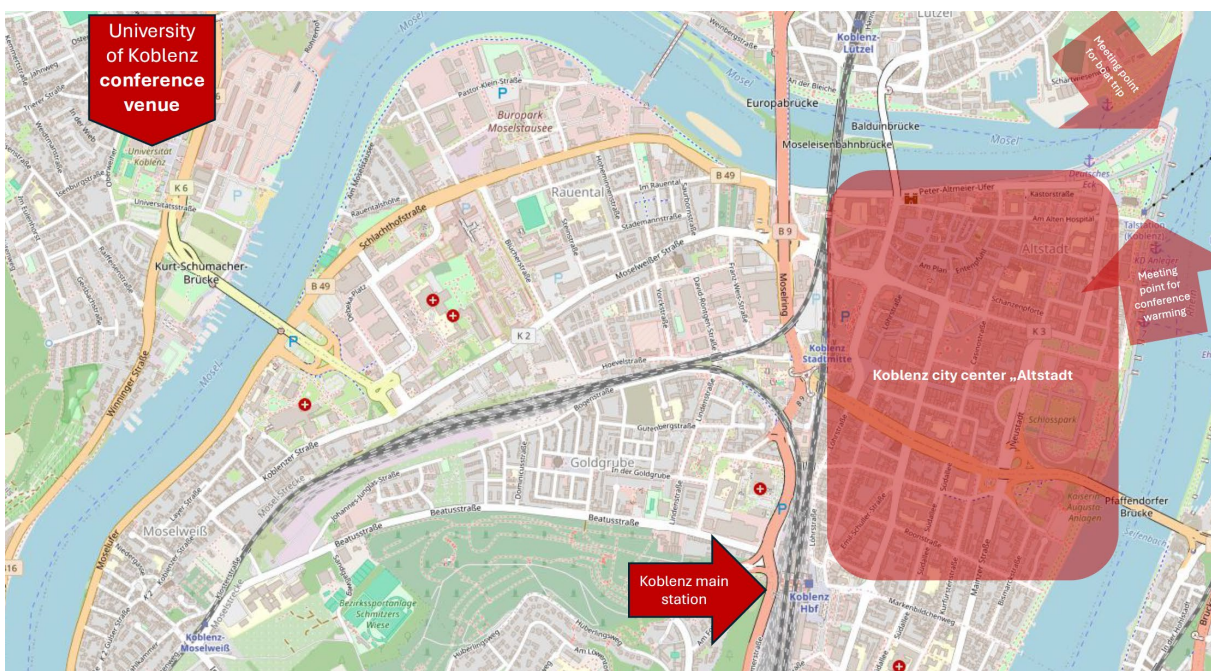


The exact address is

**Universitätsstraße 1
56070 Koblenz
Germany**

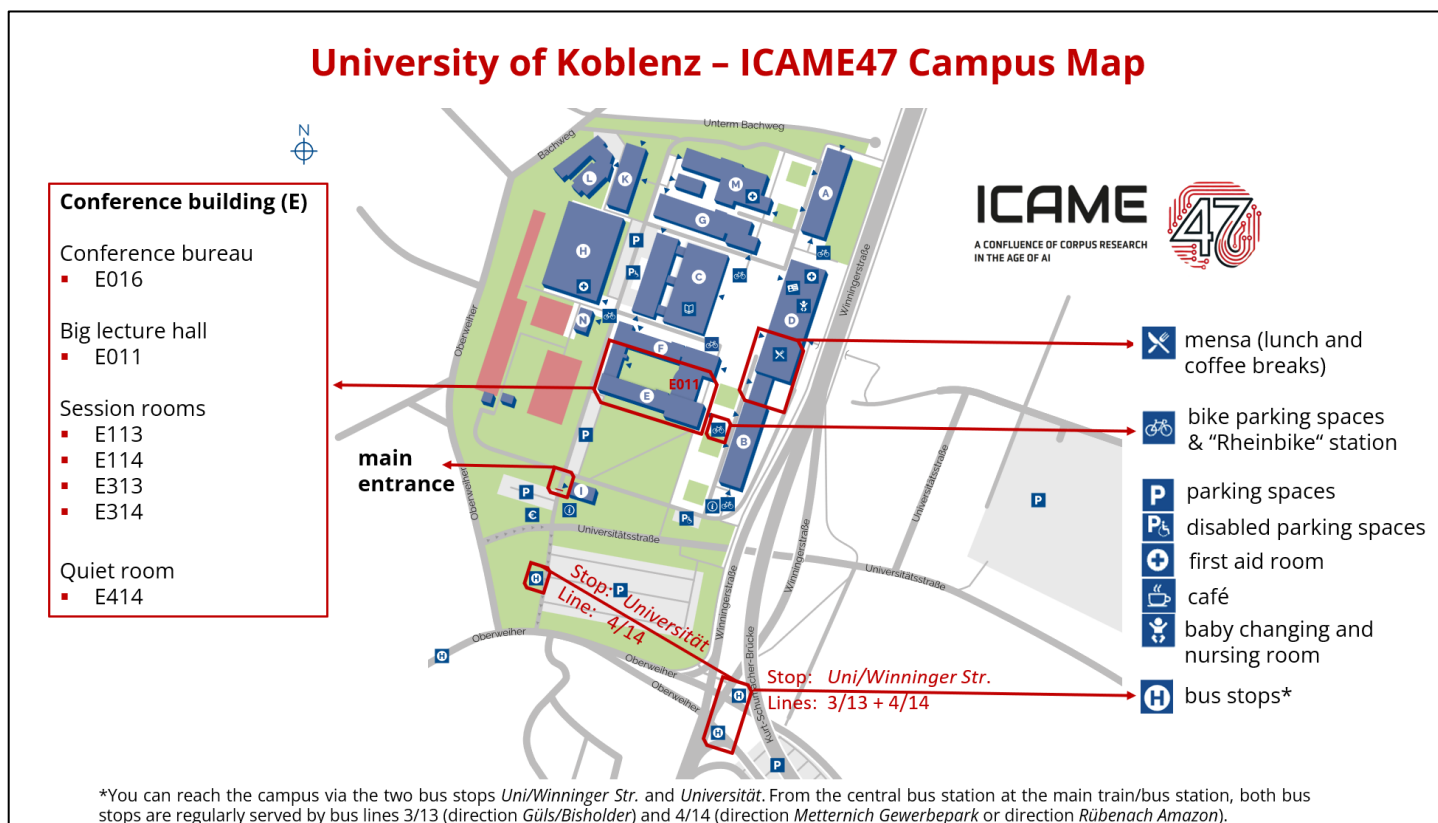


The campus is located in **Metternich**, on the north-western side of the Moselle River. It is well connected to the city centre by regular bus services (see details below). Please note, however, that two major rivers - the Rhine and the Moselle - run through the city. Depending on which side of the river you are staying on, this may affect your daily commute. Here is a city map for an overview:



CONFERENCE VENUE – CAMPUS MAP AND LOCATIONS

You can find an overview of the Campus and the exact locations of the session rooms etc. here:



CONFERENCE VENUE – LUNCH AND COFFEE BREAKS

All lunches and most coffee breaks will take place in the "Neue Mensa", a modern glass building just a stone's throw from the E building, where all conference sessions will be held. Coffee breaks and lunch are included in the conference package for all registered participants. We will also ensure that dietary requirements are accommodated. The menu will primarily feature vegetarian and vegan dishes, alongside regular options. No pork will be served. The lunch will be organised as a buffet, allowing everyone to choose the dishes they prefer.



COMMUTING IN KOBLENZ: BUS – BIKE – TAXI/UBER

Public buses:

We recommend using the public bus system operated by **koveb** for transportation within Koblenz. The **bus lines 4/14 and 3/13** provide convenient connections **between the city centre and the university campus** in both directions. You can also use **line 5**; however, the journey takes a bit longer, as the route goes via Lützel and through Metternich. A day ticket costs €5.50, a 3-day ticket €11, and a weekly ticket €20. Tickets can be purchased at ticket machines and also directly on the bus.

koveb also offers an interactive route map (“Linienetz”), which you can access here via this website: <https://www.linienetz.koveb.de/>

Please note that public transport information in Koblenz is not fully integrated into Google Maps! We therefore recommend using the **interactive koveb map** for the most reliable route information.

Conference bikes by “rhein bike”:

To support movement and flexible mobility, 10 rentable bicycles are available for conference participants.

- ➔ The bikes are located at the E-building.
- ➔ No registration is required; bikes can be used on a first come, first served basis.
- ➔ Participants are kindly asked to treat the bikes with care and to return them to the same location after use.
- ➔ The bikes can be used to commute between campus and the city or for short recreational rides as a break from the conference.

A flyer in the conference goodie bag will provide further practical details. For questions, please contact a member of the organising team.



Taxi / Uber:

Taxis are widely available throughout Koblenz and can usually be found at major locations such as Koblenz Hauptbahnhof, Zentralplatz, and the city centre. Common local taxi providers include [citycar Koblenz](#), [Taxi Goerke](#) and [Taxi Koblenz](#).

Uber is also available in Koblenz via the Uber app, primarily through UberX services. However, availability may be more limited than in larger German cities, especially late at night or outside the city centre. We therefore recommend using public transport whenever possible (see infos above).

Free shuttle bus from Campus Koblenz to city centre (Wednesday–Friday):

On Wednesday, Thursday, and Friday - the days on which we expect the highest number of participants and evening social events - we will provide one free shuttle bus **from the conference venue (Campus Metternich) to Koblenz city centre, with drop-off at Zentralplatz** (right in the middle of the city centre).

The shuttle bus is intended to accommodate the majority of participants after the daily academic programme. Of course, you are free to arrange your own schedule and travel independently - public buses to the city centre run approximately every 10 minutes (come and go as you like - though we kindly ask that you are present for your talk, chairing duties, and most of the conference programme in general, of course 😊).

The shuttle bus will depart 15 minutes after the end of the academic programme each day. The current **departure times** are as follows (subject to minor changes):

- **Wednesday, 27 May:** 16:15 h sharp
- **Thursday, 28 May:** 17:15 h sharp
- **Friday, 29 May:** 17:15 h sharp

Unfortunately, we are unable to offer a morning shuttle service from the city centre to campus (please refer to the transport information above for alternative options).

INFOS FOR PRESENTERS AND CHAIRS

All session rooms are equipped with a **projector** and can be connected via an **HDMI cable** provided. **Apple AirPlay** is also available for wireless screen sharing. Please note that AirPlay supports screen mirroring only and may not reliably stream external media sources (e.g. YouTube videos in full-screen mode). Miracast is also available for Windows devices; however, we only recommend using it if you are already familiar with the setup process.

University laptops (thinkpads with USB-C, USB and HDMI sockets & Powerpoint installed) will be provided in all session rooms and can be used for presentations. **Presenters and session chairs are kindly asked to arrive approximately 10 minutes before the start of the session** to test the setup and ensure that all connections are working properly. To ensure smooth transitions between talks, we recommend collecting all presentations for a session on the university laptop provided in the room. If you prefer to use your own laptop, please make sure that it can be connected to the projector and arrive early enough to test the setup.

We also recommend bringing the **latest version of your presentation** on a USB stick as a backup rather than sending files to the conference email account.

WIFI ON CAMPUS

We will provide a **dedicated Wi-Fi network** for the conference. **Login details will be distributed during the conference itself.**

In addition, **eduroam** is available throughout the campus and provides free wireless internet access for participants from participating institutions worldwide. More information is available: <https://eduroam.org/>

Another option is **freifunk-myk**, a free community-supported public Wi-Fi network, which is also available across campus. More information is available (only in German): <https://freifunk-myk.de/>

CONFERENCE WARMING - WEDNESDAY (27 May)

The conference warming (included in registration fee) will take place at the top of **Festung Ehrenbreitstein**, one of the most iconic landmarks of the region. With a history spanning more than a thousand years, the fortress offers a unique historical setting for the opening of the conference. Situated high above the city, it provides a spectacular panoramic view over Koblenz and the confluence of the Rhine and Moselle rivers. The combination of impressive architecture, rich history, and breathtaking scenery makes **Festung Ehrenbreitstein** an unforgettable venue and an ideal location to welcome participants and set the tone for the conference.

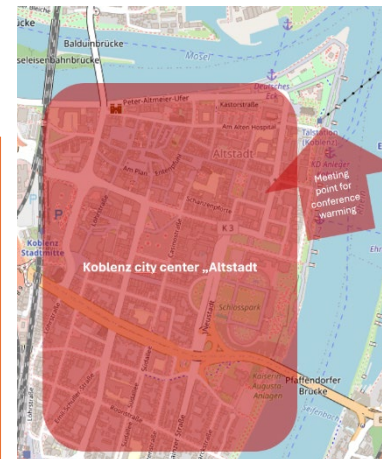


Transportation to and from the venue will be organised, so participants do not need to worry about logistics. We will take the famous **Koblenz Cable Car** up to the fortress, and pre-booked buses will bring us back down after the event.

IMPORTANT INFO FOR CONFERENCE WARMING:

**We will meet at 18:15 h sharp
at the Koblenz cable car city station.**

The exact address is of the meeting point is:
Konrad-Adenauer-Ufer
56068 Koblenz



BOAT TRIP - THURSDAY (28 May)

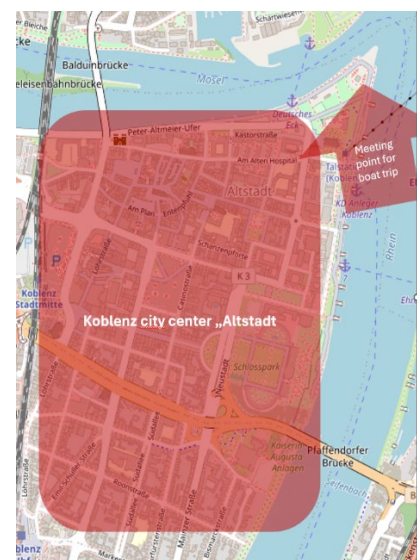
As is ICAME tradition, we will, of course, also host our conference **boat trip** (included in registration fee). This much-anticipated social event offers participants a relaxed opportunity to network, continue discussions in an informal setting, and enjoy the scenic landscape along the rivers surrounding Koblenz. During the trip, participants will experience the world-famous Rhine romanticism – *Rheinromantik* – whose dramatic landscapes and castle-lined riverbanks famously inspired Romantic writers, including Lord Byron. The route will take us through parts of the **Kulturlandschaft Oberes Mittelrheintal**, a UNESCO World Heritage Site renowned for its exceptional cultural landscape.



IMPORTANT INFO FOR BOAT TRIP:

We will meet at **18:45 h sharp** at the **Deutsches Eck (German corner)**, located at the confluence of the Rhine and Moselle rivers. After a short group photo, we will walk together to the boat pier.

The Deutsches Eck, with its large Kaiser Wilhelm statue, is one of Koblenz's most famous landmarks.



CONFERENCE DINNER AND DISCO – FRIDAY (29 May)

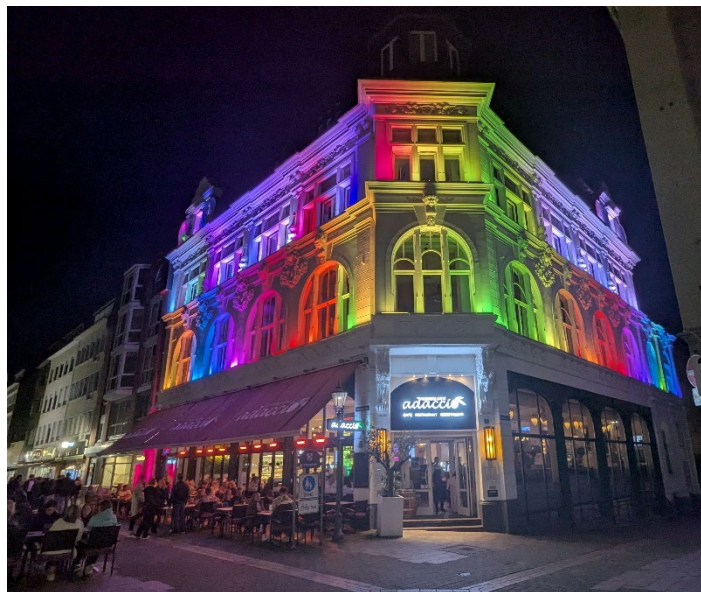
Another ICAME tradition is the **conference dinner and disco**, which will take place at the elegant restaurant and bar **adaccio**, located in the city centre of Koblenz. adaccio is situated next to Görresplatz, one of the city's central squares, and offers a stylish setting for an enjoyable evening together. Further information about the venue is available on the restaurant's website: <https://www.adaccio.de/>

The evening will feature a gala dinner with free drinks until 10:00 pm, followed by a DJ and disco until midnight. This event provides an excellent opportunity to socialise with colleagues, continue conference discussions in a relaxed atmosphere, and celebrate ICAME47 together. The conference dinner is NOT included in the registration fee and had to be booked separately.

The exact address is

**Firmungstraße 2,
56068 Koblenz
Germany**

The conference dinner starts at **20:00 h** at addacio (probably upper floor). addacio is the old building with (often) colourful outdoor lighting at the Görresplatz.



TRAVEL

As individual travel schedules may vary considerably, participants are expected to make their own travel and accommodation arrangements. If you are travelling from outside continental Europe, the most convenient airports are **Frankfurt** (approx. 1.25 hours away), **Cologne/Bonn** (approx. 1 hour away), and **Düsseldorf** (approx. 1.45 hours away). All three airports offer direct train connections to **Koblenz Hauptbahnhof** (main station).

Train connections can be checked on the Deutsche Bahn website: <https://int.bahn.de/>

Please note that train services in Germany are frequently subject to delays, so we strongly recommend allowing sufficient buffer time when planning your journey.

Koblenz can also be reached by car (e.g. via the A3 → A48 or the A61) and even by boat via the **Rhine** or **Moselle** rivers.

KOBLENZ AND ITS SURROUNDINGS

Situated in one of Germany's most renowned wine regions, **Koblenz** is a popular tourist destination and a wonderful place to explore. It is also a lovely place for cycling and hiking. Further information and inspiration for sightseeing and leisure activities can be found here:

<https://www.visit-koblenz.de/en/>

<https://www.visit-koblenz.de/en/sights>

<https://www.koblenz-touristik.de/en/departments/touristik>

<https://www.visit-koblenz.de/en/tourist-information>

We can also recommend the **Irish Pub Koblenz** for an evening night out (with karaoke usually on Wednesdays 😊). The address of the Irish Pub is: Burgstr. 7, 56068 Koblenz.

TIPS AND INTERESTING/QUIRKY THINGS ABOUT GERMANY

- Trains in Germany can occasionally be delayed or unreliable, so it is always a good idea to **allow some extra travel time**.
- Most shops, restaurants, and cafés accept credit and debit cards, but **carrying some cash is still recommended**, especially for smaller businesses/restaurants.
- Almost all bottles and cans are part of the **German “Pfand” recycling system**, meaning a small deposit fee is included in the purchase price and refunded when the container is returned. During the conference lunches, please return empty soft drink bottles to members of the organising team or the mensa staff.
- We will provide bottled water and glasses at the conference. However, in the Koblenz region – including the conference venue – **tap water is of drinking-water quality and perfectly safe to drink**. If water is not suitable for drinking, it is usually clearly labelled as such (→ “kein Trinkwasser”).

CONFERENCE WELLBEING

A five-day conference is ideally intellectually stimulating and inspiring, but it can also be demanding. We therefore encourage participants to take care of their wellbeing throughout the conference, e.g., by participating to their own needs and taking breaks as needed. Furthermore, we offer **several low-threshold opportunities to rest, move, and connect with others**.

Quiet room (E414)

A quiet room (E414) will be available throughout the conference for participants who wish to work, read, or take a break from the conference programme. This space can be used for individual work, informal meetings, or moments of rest and reflection.

To ensure that this room remains a welcoming and restorative space for everyone, we kindly ask participants to respect the need for quiet and minimise disturbances. We hope this room will contribute to a comfortable and inclusive conference experience for all participants.

Walking routes & walking meetings

For participants who prefer gentle movement, we will provide suggested walking routes around the campus and nearby areas (approx. 15–30 minutes). These routes are intended for short breaks, reflection, or informal conversation.

Participants are also warmly encouraged to use walking meetings as a relaxed alternative to seated discussions – for example, to continue a conversation after a panel or during longer breaks.

Route suggestions and the opportunity to organise group walks will be available on site.

“I seek / I offer” – community board

We invite participants to take part in a community organised board, located in the foyer of the E-building, as a space for academic exchange and connection understood as part of wellbeing during the conference.

On a display wall, participants can post short notes in the categories:

→ I seek

e.g., someone to discuss a paper or a presentation, potential collaborators for a future project or proposal, advice on balancing research, teaching and care commitments, exchange on certain methods, ...

→ I offer

e.g., an informal mentoring conversation (early career/post-PhD etc.), constructive feedback on a draft, participation in a certain network, experience with a certain method, tool or theoretical approaches, a brainstorming walk, ...

At the same time, the board can also be used to arrange activities focused more directly on wellbeing, such as movement, rest, or informal social encounters (going for a run, a walk, a bike ride, sharing a meal, exploring the city after the conference).

Participation is entirely voluntary.

Privacy note: Please do not share sensitive personal information. First names, informal descriptions, or meeting points/times are completely sufficient. Participants who prefer not to share contact details publicly may also inform a member of the organising team about what they have written on the board. In this case, the organising team can help connect interested participants with each other. By doing so, participants consent to their contact details being shared only for this specific purpose and only between the involved persons.

General support during the conference

We aim to create a conference environment that is respectful, supportive, and attentive to participants' wellbeing. If you experience overwhelm, discomfort, or interpersonal difficulties, or if you have any other concerns during the conference, you are warmly invited to approach a member of the organising team.

The organising team will be visible throughout the conference and can be contacted at the registration desk or after sessions. Reaching out is entirely voluntary, and any concerns will be handled **confidentially and with care**.

POST-CONFERENCE EDITED VOLUME

We are planning a post-conference edited volume (envisaged publisher: John Benjamins) featuring selected conference papers as full research articles. In line with the conference theme, the volume will explore intersections between corpus linguistics and AI (e.g. the language of humans and LLMs and the distinctions between them, the use of LLMs for corpus annotation and analysis, the application of GenAI methods in (historical) corpus linguistics, and the interplay between multimodal AI and corpus linguistics – among other related topics).

We would be delighted if you considered submitting your ICAME presentation (or a related contribution) for the volume. Please note, however, that edited volumes typically take up to two years to publish due to peer review, editing, and production processes. Given the rapid pace of AI developments, we therefore recommend choosing a topic with lasting relevance.

Further information will follow after the conference.